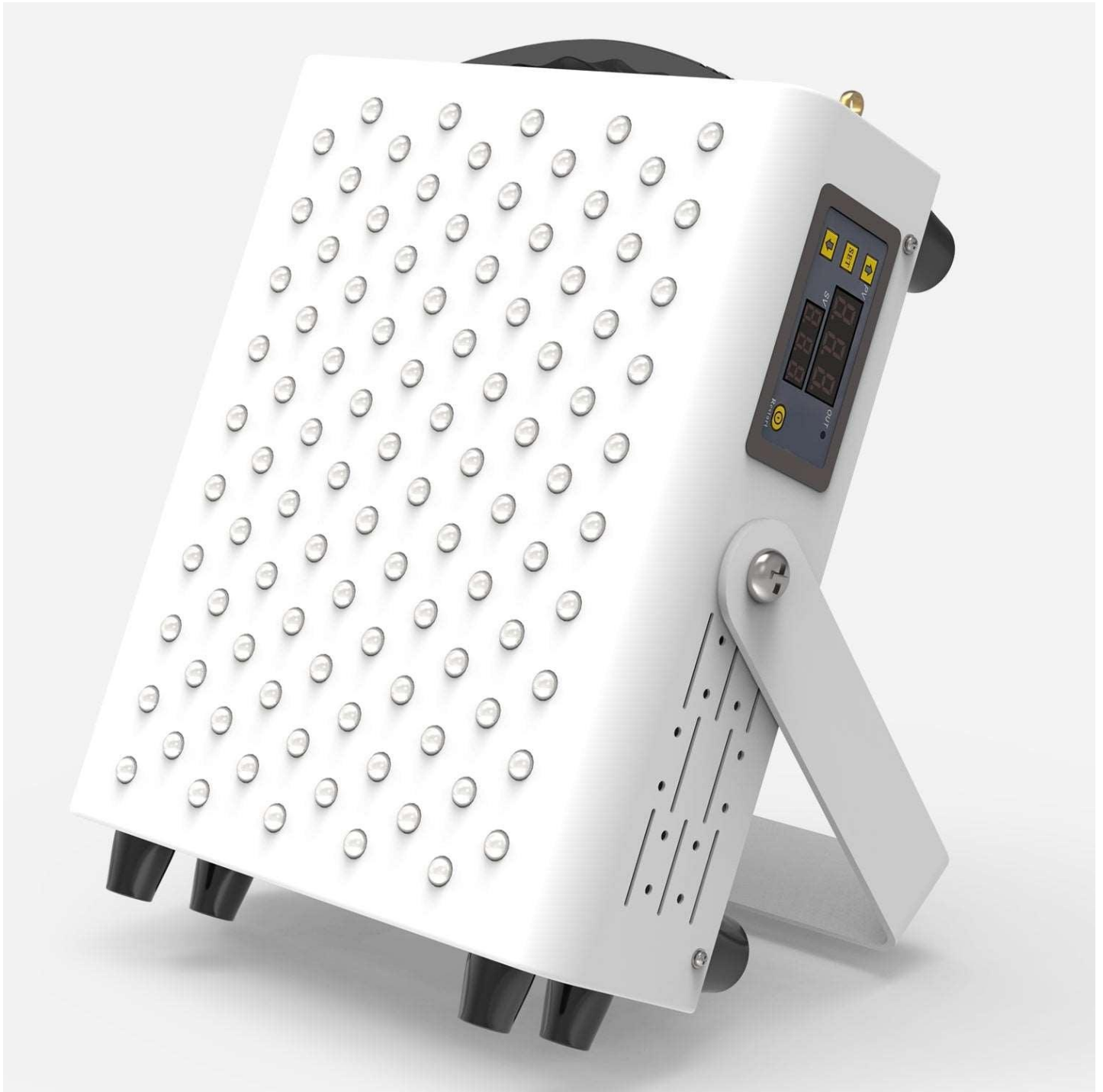


## Unleash the Glow: Discover the Ultimate Red LED Panels That Will Transform Your Space!

In recent years, [red LED panels](#) have gained immense popularity in various settings, from homes to commercial spaces. These innovative lighting solutions are not only energy-efficient but also serve to enhance the ambiance and mood of any environment. The soft, warm glow of red light can create an inviting atmosphere, making it an excellent choice for relaxation and social gatherings. This article aims to guide you through the process of selecting the best red LED panels tailored to your specific needs, whether you're looking to illuminate your living space, office, or entertainment area.



### Understanding Red LED Panels

Red LED panels are a type of lighting fixture that utilizes light-emitting diodes (LEDs) to produce illumination in the red spectrum. Unlike traditional incandescent bulbs that consume more energy and have a shorter lifespan, red LED panels are designed to be energy-efficient, lasting significantly longer—often up to 25,000 hours or more. This technology works by passing an electric current through a semiconductor, which emits light when energized. Red LED panels are available in various designs, with different color temperatures and brightness levels, allowing users to customize their lighting experience. They can also be integrated into smart home systems for added convenience and control.

### Benefits of Using Red LED Panels

One of the standout advantages of red LED panels is their ability to enhance mood and create a calming environment. Red light has been associated with improved focus and productivity, making it an excellent choice for workspaces. Furthermore, studies suggest that red light exposure can have potential health benefits, such as improving sleep quality and reducing eye strain. In homes, red LED panels can be used to create a cozy atmosphere for movie nights or intimate gatherings. Additionally, they are increasingly prevalent in entertainment venues, where they contribute to the overall aesthetic and experience.

## Key Factors to Consider When Choosing Red LED Panels

When selecting red LED panels, several key factors should be considered to ensure you make the right choice. First, assess the size of the panel to fit your space appropriately. Next, consider brightness, measured in lumens; higher lumens indicate brighter light. Energy consumption is another critical aspect—look for panels with lower wattage that still provide adequate illumination. The design of the panel should complement your decor, and it's essential to check for color accuracy, especially if you plan to use them for specific tasks. Lastly, compatibility with smart home systems can enhance convenience, allowing you to control your lighting with ease.

## Comparing Different Types of Red LED Panels

The market offers a variety of red LED panel types, each with its pros and cons. Flat panels are versatile and can be mounted on ceilings or walls, providing even light distribution. Light strips are flexible and can be used in creative ways, perfect for accent lighting. Dimmable options allow users to adjust brightness levels according to their needs, adding versatility to your lighting setup. However, flat panels may require professional installation, while light strips may not provide as much brightness for larger areas. Understanding these differences will empower you to choose the right type for your specific application.

## Installation Tips and Best Practices

Installing red LED panels can be a straightforward process if you follow some best practices. First, determine the optimal placement for your panels to ensure effective light distribution and aesthetic appeal. It's essential to install them at a height that maximizes light spread while avoiding glare. If you're using adhesive strips, ensure the surface is clean and dry for better adhesion. Regular maintenance, such as cleaning the panels to remove dust and debris, will help maintain their performance and longevity. Lastly, consider using a dimmer switch for added flexibility in adjusting light intensity.

## Final Thoughts on Red LED Panels

In summary, red LED panels are an excellent investment for anyone looking to transform their space. They offer numerous benefits, from enhancing mood to improving focus, making them suitable for various environments. By understanding the technology behind red LED panels and considering essential factors before making a purchase, you can find the perfect solution to meet your lighting needs. Explore the different options available, and enjoy the vibrant, inviting glow of red LED panels in your home or workspace!